

QUEST AMD WARRANTY

find
impossible



Thank you for choosing the Quest AIR Metal Detector. We're committed to providing you with a high-quality product, designed for optimal performance and durability. This document outlines our general warranty terms for your new detector.

Waterproof Capability

The Quest AIR Metal Detector is designed to be waterproof up to a depth of 1 meter. Please note that the waterproof capability is conditional upon correct usage and preparation as outlined in the user manual. Failure to adhere to these guidelines may void this aspect of the warranty.

Warranty Period

The coil component of your detector is covered under a 2-year warranty, effective from the date of purchase.

Exclusions

This warranty does not cover damage resulting from:

- Improper usage or failure to follow the user guidelines.
- Attempts to repair or modify the device by anyone other than authorized service personnel.
- Accidental drops, impacts, or exposure to conditions outside the specified operational parameters.
- Customer Responsibility
- It is the responsibility of the customer to demonstrate that the product has been used according to the guidelines to avail of the warranty service. Any evidence of misuse may void the warranty.

Service and Repairs

For warranty service or repairs, please contact an Authorized Service Center. Proof of purchase will be required to validate the warranty period. Any service or repair performed by unauthorized personnel will void the warranty.

Limitation of Liability

The warranty is limited to the repair or replacement of defective parts. We are not responsible for any consequential losses or damages arising from the use of the product. By using your Quest AIR Metal Detector, you are agreeing to the terms of this warranty.

Please keep this document and your purchase receipt in a safe place for future reference.

INSTRUCTION MANUAL

QUEST AMD

Version: V202405

As an innovative brand, We might change settings or tech specs to improve users experience and may not always notify you in advance. Thanks for your understanding~



MENU

READ CAREFULLY BEFORE OPERATION OF THE DEVICE

Comply with applicable laws and regulations governing use of metal detectors while using this detector. Do not use the detector without a authorization in protected or archeological sites. Do not use this detector around unexploded ordnance or in restricted military zones without authorization. Notify appropriate authorities with details of any historical or culturally significant artifacts you find.

WARNINGS

- ▶ The Quest Air Metal Detector is a state-of-the-art electronic device. Do not assemble or operate the device before reading the user manual.
- ▶ To avoid affecting after-sales service, please refrain from disassembling the circuit of the lower rod arbitrarily.
- ▶ Do not store the device under extremely low or high temperatures for extended periods. (Storage Temperature: -20°C to 50°C)
- ▶ The device has been designed with IP68 rating as a waterproof unit up to 1 meter.
- ▶ Pay attention to the items below after using the device especially under salty water:
 1. Wash the rod and the coil with tap water and be sure no salt water is left in the connectors.
 2. Do not use any chemicals for cleaning and/or for any other purposes.
 3. Wipe the rod dry with a soft, non-scratch cloth.
- ▶ Protect the detector against impacts during normal use. For shipping, carefully place detector in original carton and secure with shock resistant packaging.
- ▶ The Quest Air Metal Detector may only be disassembled and repaired by Quest Authorized Service Centers. Unauthorized disassembly/intrusion into the metal detector control housing for any reason voids the warranty.

IMPORTANT!

- ▶ Do not use the device indoors. The device may constantly give target signals indoors where there are many metals present. Use the device outdoors, in open fields.
- ▶ Do not let another detector or an electromagnetic device come in close proximity (10m (30ft.)) to the device.

Setup	2
Assembly	2
Holding a Phone	2
Storage	3
App & Connection	4,5
Mobile App Installation	4
Smart phone connection	4
Interface & Settings	6
Interface	6
Settings	6
Charging	7
Detecting	8
Specifications	9
Trouble Shooting	10
Warranty	11

EU Declaration of Conformity

Hereby, Dongguan Quest Detection Technology Co., Limited declares that this radio equipment is in compliance with directive 2014/53/EU. The full text of the EU declaration of conformity is available at the following address: www.detectorportal.eu/compliance



SETUP

ASSEMBLY



Release the locking lever located at the bottom of the handle. Then, push the handle into the upper rod. Next, press down the locking lever to secure it in place. Insert the armrest to the button of upper rod, use a Phillips screwdriver to tighten it securely. Insert the middle rod into the upper rod and the lower rod into the middle rod.

HOLDING A PHONE

Pull the clamp of the phone holder to unfold it. You can then twist it for horizontal (recommended) or vertical orientation. Next, pull the clamp and place your phone securely into the holder.

When the phone is not placed in the holder, the clamp can be folded to seamlessly integrate with the handle. Alternatively, the holder can be easily removed from the handle, and you may install the provided handle cover into the handle hole if you do not want to use the holder.



STORAGE



The Quest Air can be easily flat-folded for more compact storage. Simply pull out the lower rod, rotate it 90 degrees, and insert the middle rod.

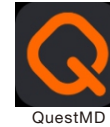


3

APP & CONNECTION

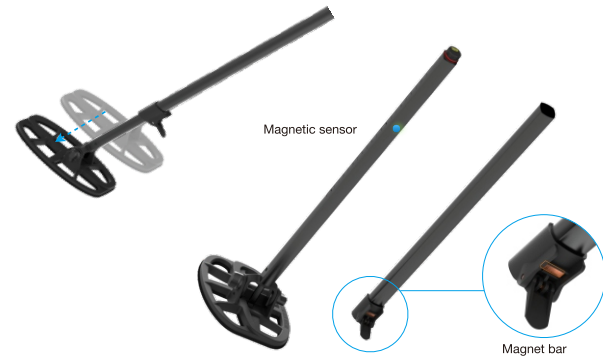
MOBILE APP INSTALLATION

Search and download "QUEST AIR MD" application from Appstore or Google Play Store.



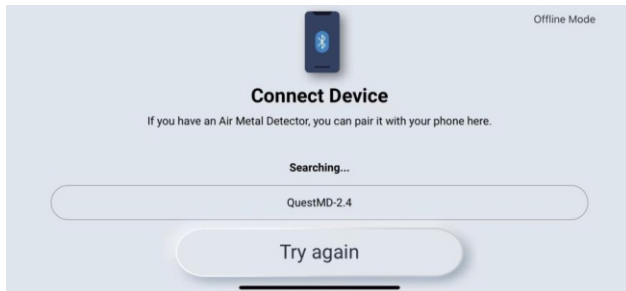
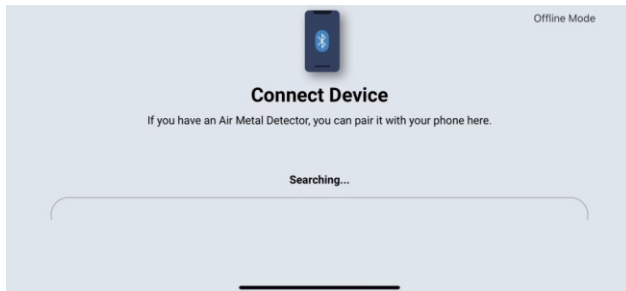
SMART PHONE CONNECTION

1. **POWER ON.** To activate the coil, simply pull out the lower rod from the middle rod to the place where you can find the magnetic sensor. This action will trigger the magnet, sending a signal to the magnetic sensor to power on. (After the coil is connected with the app, you may adjust the length of the lower rod as needed.)



4

2. **Bluetooth & GPS setting.** For Android, enable Bluetooth and GPS in settings; for iPhone, enable Bluetooth.
3. **Launch the Quest AIR MD app.**
4. **Search Quest Air detector in the App.** In the Bluetooth device searching list, locate and select "QuestMD-V2.4". If not found, ensure Bluetooth and GPS are enabled, and verify the correct placement of the lower rod. Press "Scan" in the middle of the screen to resume Bluetooth device scanning.



5. **Wait for the coil to establish a connection.** If the coil fails to connect, close the application, turn off Bluetooth (or reboot the Android device), or adjust the lower rod placement, then retry from step #3&4. To disconnect the coil from the app, simply press the power button located in the upper right corner of the app. Once disconnected, the coil will be deactivated.

INTERFACE

1. Battery Indication
2. Target Type
3. Discrimination Mask
4. VDI number
5. Depth
6. Chosen Setting -
7. Setting Menu
8. Chosen Setting +
9. All Metal Mode
10. Pinpointing
11. Ground Balance
12. Quit the App
13. App Setting



SETTINGS

SENSITIVITY (1-50)

Sensitivity: The higher the more your detection depth increases.

Caution: High sensitivity may result in more false positives and unstable signal quality.

DISCRIMINATION (-90,-80,-70,...., 0,5,10,15,....90)

Unwanted metals discrimination.

Below zero indicates iron, while above zero indicates non-ferrous metals.

RECOVERY SPEED (0-10)

Increasing the recovery speed improves metal detection in cluttered areas. However, it reduces detection depth and raises the minimum coil swing speed above targets.

TONES (1...4, FAST)

The number of tones corresponds to various metals. In FAST mode, there's the maximum number of tones and maximum speed.

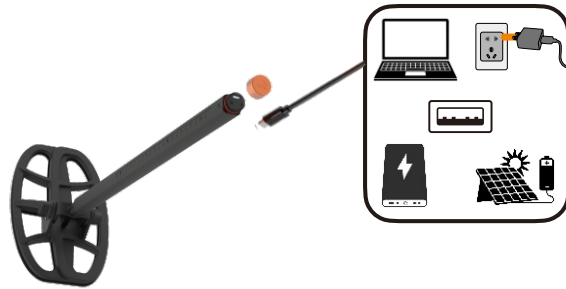
THRESHOLD TONE (0-10)

A permanent background tone aids in discriminating between wanted and unwanted targets. This feature is only available in FAST mode for the "TONES" setting.

HOT ROCKS (0-10)

Suppresses signals from hot rocks. Highly mineralized soils with hot stones can cause false positives with signal strength above 85. Raise the setting until signal strength from hot rocks becomes comfortable to work with. Setting it too high may reduce detection ability for large silver coins.

CHARGING



Before first use, it is recommended that you fully charge the battery for 6 hours.

Use a high-quality mobile phone charger plug to charge the detector. The specific steps are as follows:

Detach the lower rod and unscrew the orange protective cap of the detector. Insert the larger end of the charging cable into a socket or a computer with a standard plug, or a solar power bank, and insert the smaller end (Type-C) into the metal detector plug.

Charging typically takes between 5 to 6 hours.
Need to check the app for the charging status.

Once fully charged, the battery can operate for approximately 10 hours.

DETECTING



1, Swing the coil: Maintain the coil about 4cm above the ground and ensure that swings overlap to cover the area thoroughly.



2, Activate Pinpointer: Upon hearing a distinct tone, press the PINPOINTER button in the app and move the coil in a crisscross manner (XING) to pinpoint the target accurately.



3, Utilize the Pinpointer: Employ a pinpointer to precisely locate the target's position.



4, Digging Process: Use the digging tool to expose the target gradually. Ensure you excavate thin layers of soil to avoid missing any items, periodically checking with the pinpointer for accuracy.

SPECIFICATIONS

Working frequency: 7.5kHz

Audio Output: Via smartphone

WIRELESS AUDIO: Optional Bluetooth WIREFREE VIBE or PRO HE

Smartphone compatibility: Built-in 4.0 Bluetooth module

Coil: 9x5 inch double D waterproof coil

Battery: Built-in 750mAh Li-Po battery for 10 hours of operation

Charging port: USB-C

Protection: Entire unit IP68, waterproof to 1 meter

Detecting Mode: All Metal or Discrimination

ID range: -90 to 90

Ground Balance: Automatic (pump) or Manual (selecting)

Pinpoint: Yes

Telescopic Rod: Fast release cam-lock 2 sections straight rods extendable from 80CM to 130CM

Armrest: U-shape with kickstand

Weight: Lightweight at 2.5 lbs

Operation Temperature Range: -20 to 50°C

IN THE BOX

Lower Rod with Coil *1

Middle & Upper Rod *1

Arm Rest *1

Handle with Phone Holder *1

Handle Cover *1

Charging Cable *1

Arm Rest Band *1

Manual *1

TROUBLE SHOOTING

1. Cannot find Quest AIR Metal Detector in App

Check Coil: Ensure that the low rod is properly extended. Try retracting and extending the lower rod to the right place again.

Check App: Make sure Bluetooth and GPS settings are enabled.

2. The Audio response is slow

Keep Close: Maintain the phone within 10 meters of the handle/coil for prompt audio feedback, the closer the better.

3. Too Much Noisy Sound

Move Away: Keep distance from electronic devices or power lines.

Balance It: Perform a Ground Balance automatically or manually.

Lower Sensitivity: Turn down the Sensitivity setting.

4. No Sound with Wireless Headphones

Check Headphones: Make sure they are powered on.

Activate Wireless: Ensure the detector's wireless function is enabled and paired with your phone.

Charge Headphones: Make sure they are fully charged.

Volume: Check both the headphone and your smartphone volume settings.

Try Wired: If all else fails, try wired headphones with your phone.

5. Disconnection with App

Check battery status: Check the coil battery status on your phone.

Check coil: Avoid submerging underwater beyond 50cm

Reconnect the coil with the App as per the instruction on Page 4.