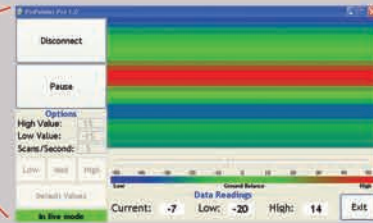


PC Video Glasses



Equivalent to a 17" monitor



- *Mono viewer
- *Daylight readable
- *Hands-free, heads-up viewing
- *Plug and play

Project the image right where you need it most, right in front of your eyes.

Prices from \$1100 USD

* As available. Prices and Video Glasses models subject to change.

This new **Ultra Mobile PC (UMPC)** is a full function PC that is rugged and small for the ultimate in mobility. Complete with touch screen key board and functions.



The **Ultra Mobile PC** has advanced software which makes the unit simple, the software is included along with Windows XP, built-in Wi-Fi and Bluetooth

* As available. Prices and UMPC models subject to change.



The Underground Surveyor Apparatus and the GeoSurveyor Software were designed and built in the USA

USA Models



	Double Magnum	Runabout	Discovery	Imager
Live Mode	•	•	•	•
Control Unit	•	•	•	•
Field Pack	•	•	•	•
Wiring Harness	•	•	•	•
Cables	•	•	•	•
Battery 24V	•	•	•	•
Charger 24V	•	•	•	•
Software	•	•	•	•
Video	•	•	•	•
Extension Rod	•	•	•	•
User Manual	•	•	•	•
Tech Support	•	•	•	•
Pelican Case	•	•	•	•
Antenna Case	•	•	•	•
Sensors	2	4	8	16
20" Antenna	•	•	•	•
24" Antenna	•	•	•	•
Pinpointer	•	•	•	•
Laptop	•	•	•	•
TOTAL	\$6,495	\$9,525	\$18,640	\$25,195

(Prices in USD)

Optional Antennas

Double Magnum	2 Sensor	10" Antenna	\$1375
		20" Antenna	
		36" Antenna	
Runabout	4 Sensor	12" Antenna	\$1650
		20" Antenna	
		36" Antenna	
Pinpointer	Standard with Discovery and Imager		\$2750
Discovery	8 Sensor	12" Antenna	\$2120
		20" Antenna	
		36" Antenna	
Imager	16 Sensor	24" Antenna	\$3135
		36" Antenna	



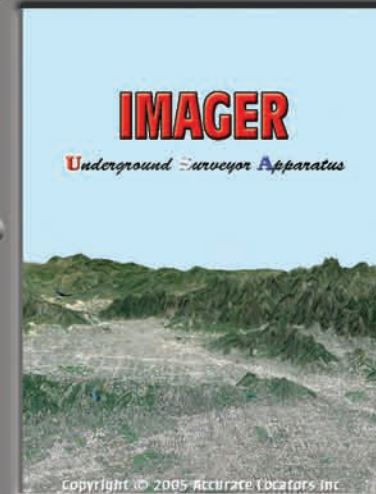
You may choose a pre-configured 10", 12" or 14" Laptop Computer or supply your own for a \$600 USD* discount (Windows up-loads extra). In addition you also have the option of purchasing the extra Laptop Power Assembly for an additional \$200 to provide extra hours of Laptop battery life in the field (larger spare battery available).

* As available. Prices and models subject to change.

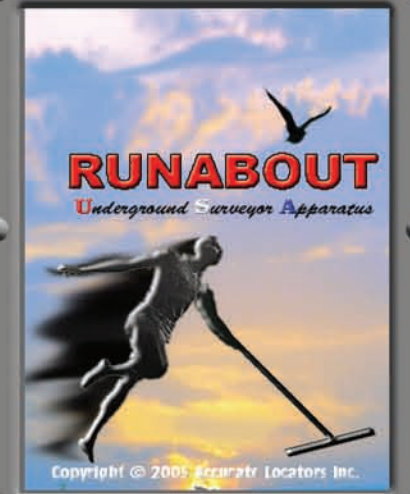
- New Detection Speed
- Automatic Ground Balancing
- Boats / Vehicle Mount
- Find Buried Treasure
- Locate Utilities @ 18 MPH
- Subsurface Water
- Tunnels / Caves / Voids to 200+ Feet
- Compact and Lightweight
- New Updated Software
- Ore Bodies
- Placer Pay Deposits
- Locate Ship Wrecks
- Metals and Minerals
- Mining Applications
- Subsurface Anomalies
- New 6' and 8' Antennas available
- Optional Geocaddy
- Sinkhole / Fault Detection
- Mark Locations with optional GPS
- 2 Hour Tech Support or Demonstration included (Demos by Appointment Only)

ACCURATE LOCATORS INC.

16 Sensor Unit

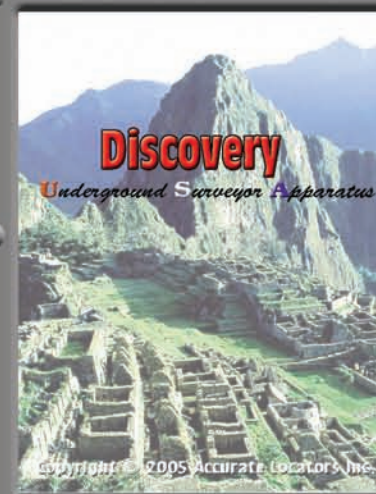


4 Sensor Unit

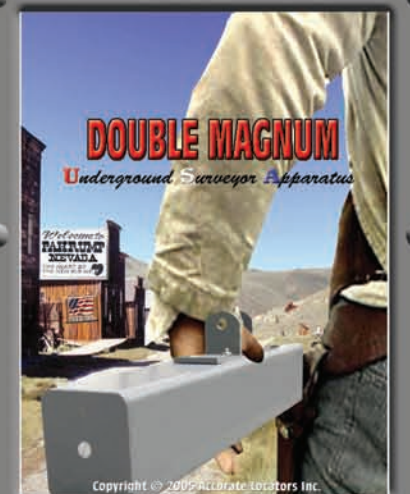


Made in the USA

8 Sensor Unit



2 Sensor Unit



Accurate Locators Inc.

1383 2nd Ave. Gold Hill, Oregon 97525

For Ordering (USA & Canada)

877-808-6200 ♦ 541-855-1590 ♦ 775-751-6931

International Sales: 01-541-855-1590 Fax: 775-537-6613

e-mail: accurate@accuratelocators.com

ACCURATE LOCATORS

ONE OUNCE FINE GOLD BAR

999.998

With show rooms in Gold Hill, OR and

Near Las Vegas, NV

Over the hump in Pahrump

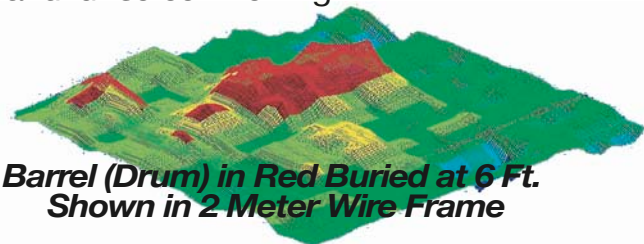
Web site: www.accuratelocators.com
www.imaginglocators.com

Underground Surveyor Apparatus

ACCURATE LOCATORS INC.

"GeoSurveyor" Software™

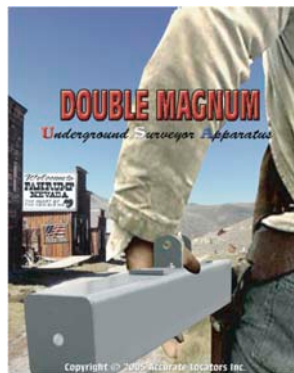
The **Ground Imaging Systems** are a state of the art Multi-Sensor array that are capable of extraordinary sampling rates, producing detailed and efficient results. The **Ground Imaging Systems** are well suited for both the professional treasure hunter as well as the utility locator. The USA models have advanced software which makes operating the units simple. The software renders a 3-D image and has user-adjustable and definable factory presets to enable quick analysis and target identification. One of the most distinguishing features of the Runabout, Discovery, and the Imager are it's **"Real-Time"** Live Mode. The Live Mode enables the user to scan in any direction to locate subsurface anomalies. Another uniqueness is the speed that they are capable of sampling; you can run if you like with astonishing results and full screen viewing.



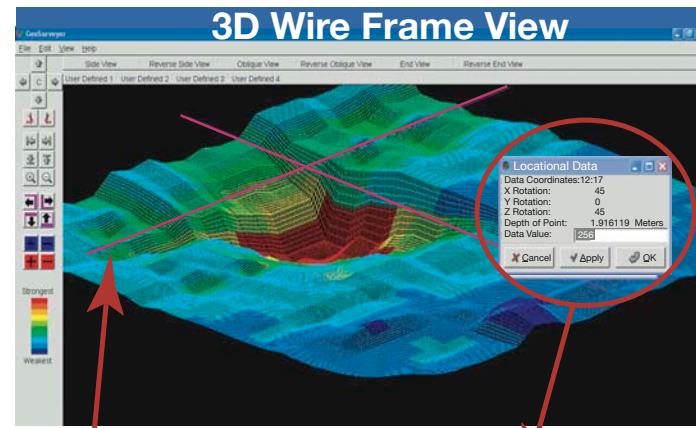
Barrel (Drum) in Red Buried at 6 Ft. Shown in 2 Meter Wire Frame

Double Magnum

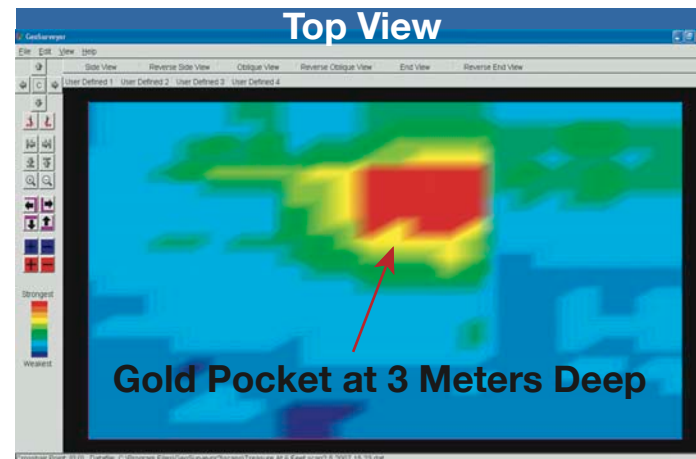
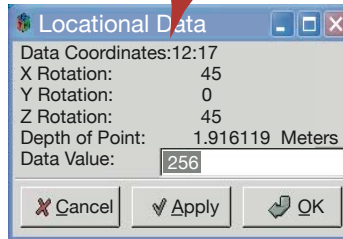
The **Double Magnum™** has a dual sensor antenna which is designed for the purpose of locating larger items including buried treasures, caves, tunnels and voids. See subsurface objects with the Geo Surveyor 3-D software. The **Double Magnum** receives a high sampling rate and work in almost all ground conditions with the ability to detect objects and tunnels up to **120+ feet!** The Double Magnum is the choice of many professionals. The unit has a starting price at \$6,195 (USD) including Laptop.



With **Accurate Locators Inc.** software you can choose how you look at a scan, (utilizing 3D filters) choosing what angle and mode to better understand and see what a target is and where it is located.



Clicking cross hairs over scan indicates distance from scan beginning and depth of target under the intersection of cross hairs (shown in red).



Finding **GOLD** deposits like the one indicated here is easily mapped for size and depth to make planning the mining method and cost easier to calculate. Finding Treasures is easier and faster with the right equipment. That is what **Accurate Locators Inc.** does best. We have proved it time after time. The results are the proof. If you are serious about finding treasures and you want the best It's **Accurate Locators Inc.**



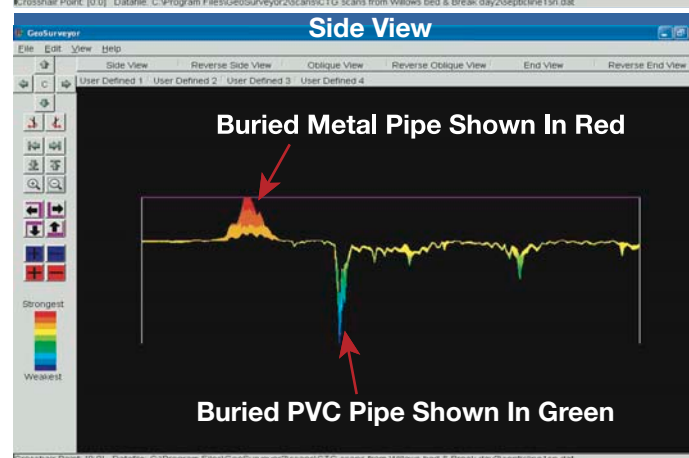
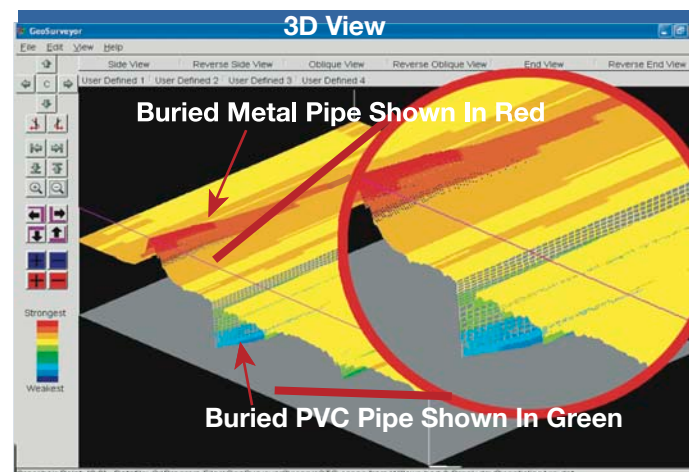
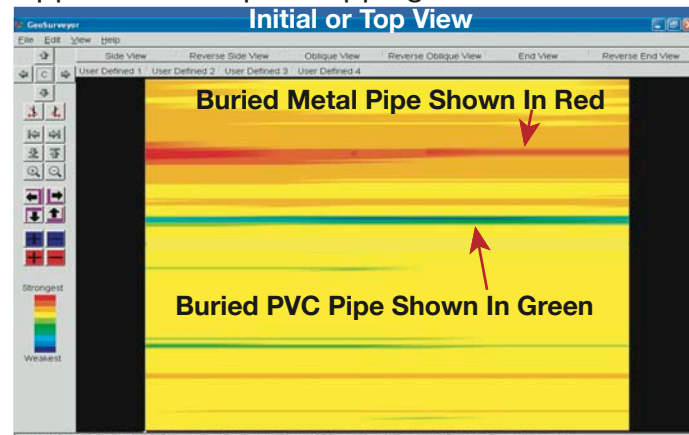
"SSP" Pulse Induction Antenna



8' USA Discovery Antenna
6' Antenna also available

Utility locators can't miss with **Accurate Locators Inc.**

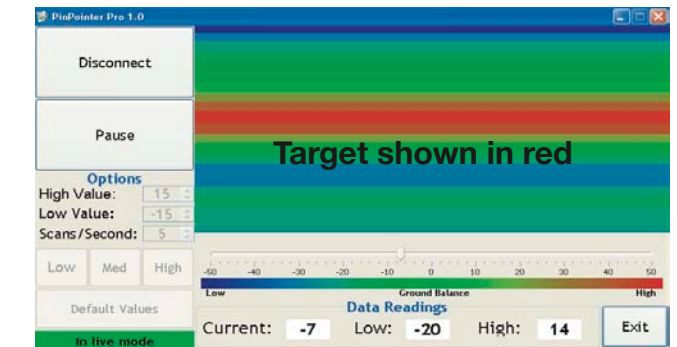
Underground pipes shown in three different modes for easy, accurate location and approximate depth mapping.



Utility Scanning



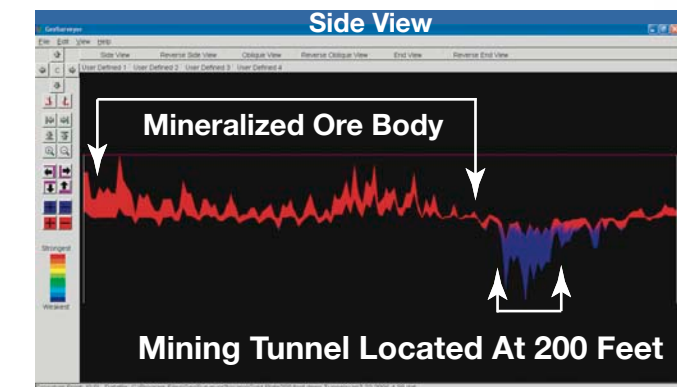
Underwater Scanning



PINPOINTER

New **FREE** update software for your Pinpointer is available free for the asking.

The Pinpointer works with the USA Discovery, Imager, Runabout and Double Magnum. Equipped with a collapsible handle and case, this addition is capable of greater depths to assist in detection of *large* and *small* targets as well as voids and assists in depth calculations.



GPS



In mining, GPS positioning data can be critical to mission planning, safety and legal claim. **Accurate Locators Inc.** offers GPS survey systems optimized for mining surveys to acquire and stake out features with precision accuracy (optional equipment).

Accurate Locators Inc.
Since 1992

Each **Underground Surveyor Apparatus** is personally customized because you build the system to fit your unique detecting needs. We offer four basic models to choose from, each in a complete package: the Double Magnum, the Runabout, the Discovery and the Imager. For even more coverage per scan you can choose from a variety of antennas specifically designed for each USA model. For more information:

www accuratelocators.com or www imaginglocators.com