

COBRA WiFi

2 CHANNEL GPR

*Detect both shallow
and deep pipes*

- ✓ WiFi operation – no cables needed
- ✓ Dual Channel GPR, 250/500 MHz
- ✓ Complete GPR-system – all inclusive
- ✓ Included Post Processing Software
- ✓ GPS Path Finder map
- ✓ Wide selection of Control Units:
Mobile phones to rugged PDA/PC

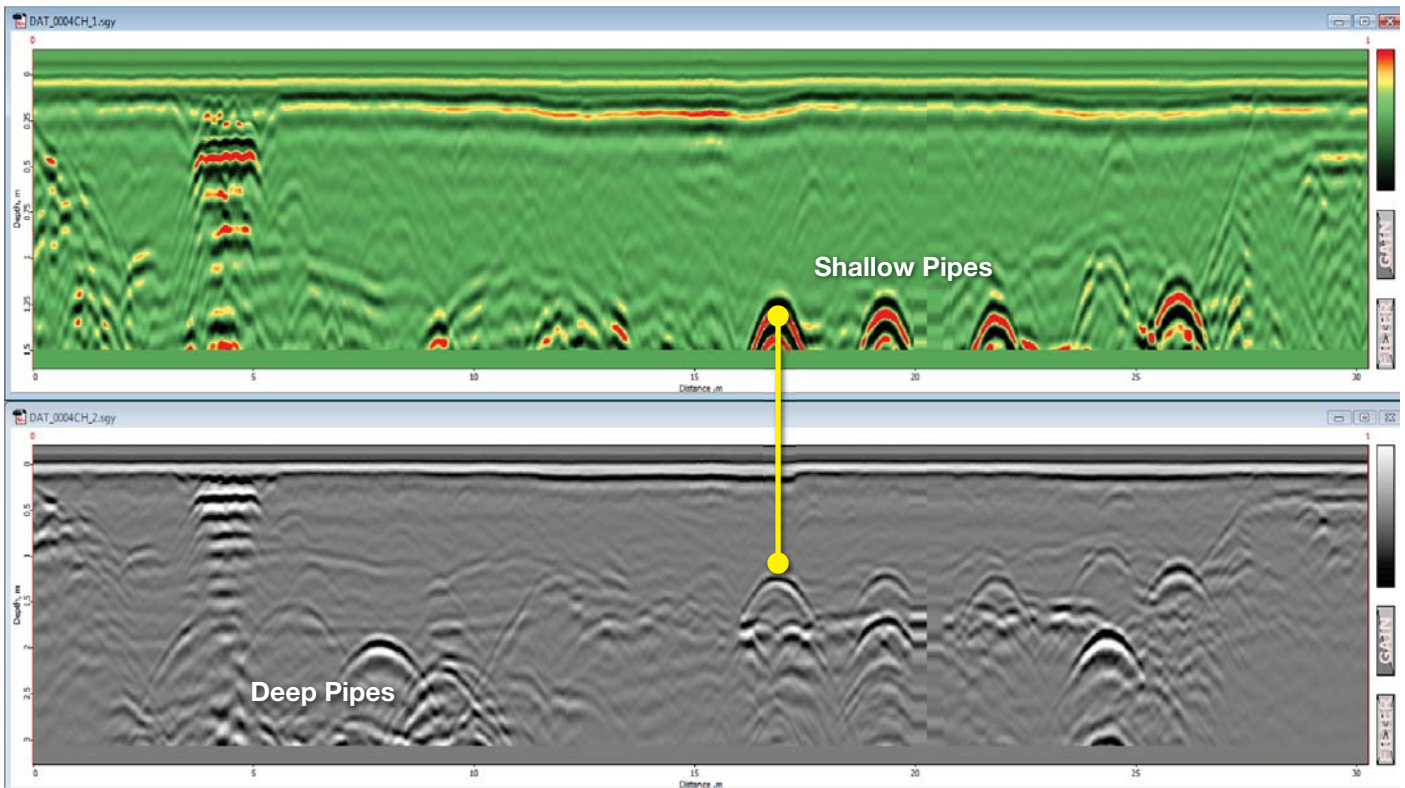
- Quick release wheels ✓
- Adjustable Cart handle and cradle ✓
- Integrated High Resolution Encoder ✓
- Tow handle for rough terrain ✓
- Depth Range: 0-2000 ns ✓
- High Power: 400 V Transmitter ✓
- Compact flexible system: 15 kg ✓



**RADARTEAM
SWEDEN AB**

COBRA WIFI UTILITY SAMPLES

SIMULTANEOUS LOCATION OF BOTH SHALLOW AND DEEP PIPES (PC ONLY)



TYPICAL APPLICATIONS, LOCATION AND DEPTH TO

- ✓ Plastic, concrete and metallic utilities
- ✓ UST, Underground Storage Tanks
- ✓ Obstacles in front of drilling, cutting or coring operations
- ✓ Duct banks, voids and vaults
- ✓ Illegal connections
- ✓ Water leakage points

WIDEST SELECTION OF CONTROL UNITS: MOBILE PHONES TO RUGGED PDA/PC



HTC MOBILE PDA



MESA ULTRA RUGGED PDA



RUGGED CF-19 PC