

New Beep Antenna



The Beep Antenna + GPS Only \$12,995.00

Standard components:

- ° Control Unit
- ° Charger
- ° Spare Cable (6ft.)
- ° Carrying Bag
- ° 2 User's Guides
- ° GPS w/Interface Cable
- ° USB Cable
- ° RS-232 Cable
- ° Beep Antenna w/Mounted Cable

Beep Antenna, Model AL8+GPS

Use it to measure Total Field Mag & Near Surface Conductivity
up to 10 times per second with GPS Positioning
Discover Au, Ag, Pt, Cu, Ni, and Zn mines that may not
even react to airborne or ground EM

Y: 36° 27' 4670" N
X: 116° 02' 5786" W

GPS Position

HFR	+1080	MEM	29
MAG	-55	RT	8%

**Magnetite
and
Conductivity**

3 Million
in development costs
so you can find Gold Mines
and Treasures.

With this instrument
you can find it, then locate
it again using the GPS.

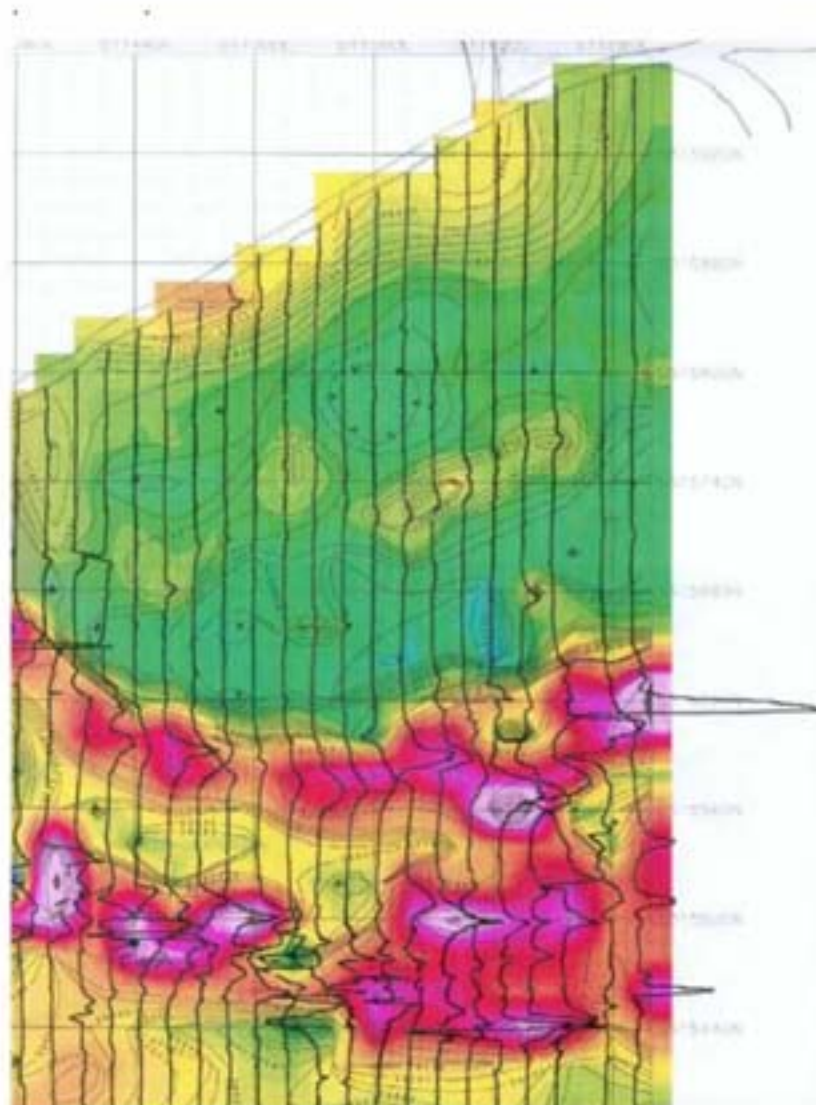


Accurate Locators

The New AL8

Registering Total Field Mag & Near surface conductivity with GPS positioning during a 100 hour sampling. Use the *New AL8* to discover Au, Cu, Ni, PGE's and Zn sulfides that may not react to airborne or ground electromagnetic (EM) surveys.

Example of a Mag survey produced with the AL8 EM sensor data. Similar sub-surface conductivity map can be produced from the collected AL8 data.



Finding TREASURES has never been this easy or accurate.

Enhanced Beep Antenna, Model AL8 with GPS

Thanks to its increased memory and its new software, the AL8 enables the storage of up to 100 hours of field survey. The AL8 reading module records the magnetic susceptibility and the conductivity 10 times per second while the GPS position is recorded once per second.

Don't know where to start, too many targets to drill or not enough money to drill all the conductors? Use the **Beep Antenna** to cover the whole property to find and sample near surface conductors inexpensively from which one will choose the best assays to drill.

This powerful miniaturized electromagnetic survey instrument instantly detects up to 10 times per second conductive and magnetic outcrops or treasures hidden under up to 15 Ft. (4.5 M) of overburden or snow. The new **Beep Antenna** can be pulled by a man, a snowmobile or an ATV at up to 18 MPH to detect conductors while recording data and GPS position. Afterward, one can draw quickly a map of conductors with the GPS position of the conductors using the Excell Macro from **Accurate Locators**. The targets are delineated and sampled for assays. Find gold, nickel, copper, vanadium, cobalt, titanium... with the **Beep Antenna**.



← Typical map used for Beep Antenna prospecting

- Red stars indicate trenches and samples discoveries made by Beep Antenna surveys
- Black and white circle spots are EM anomalies to investigate
- Topography, overburden depth
- coordinates, etc, are also indicated



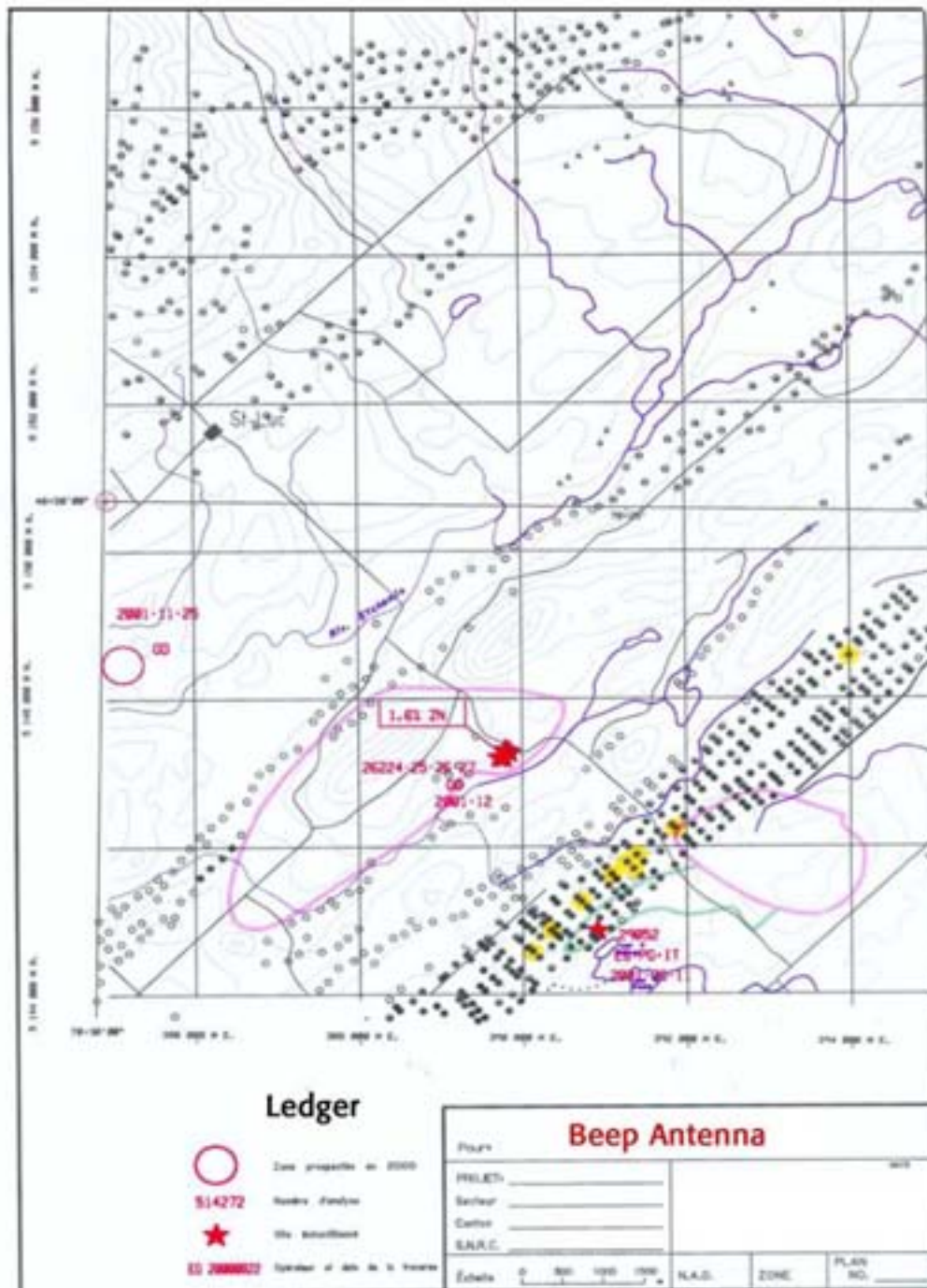
← The Beep Antenna responded to a gossan hidden under 3 meters of alluvion, in Peru.

Prospecting with the Beep Antenna in Siyle, Turkey. →



Beep Antenna, Model AL8 with GPS

Example of a compilation map integrating airborne EM, GPS coordinates, roads, topo, rivers, etc. used to guide the crew in areas combining thin overburden and EM conductors to sample.



The AL8 antenna with GPS will help you to track trench and sample near surface conductors associated to known airborne and/or ground EM surveys or present mines. Such an approach cost 1/10 to 1/100 of the typical program cost.

BEEP ANTENNA, MODEL AL8 + GPS



6. Exploration Services digging a conductor found with the Beep Antenna



12. The GPS localizes the sampling site.

Now that the conductor has been sampled, go find the next one... Back to camp, the Beep Antenna traverses and sampled sites of the day are drawn on a computer. When assay results are in, it is easy to select sites for detailed trenching and/or diamond drilling.



7. In the summer, an all-terrain vehicle carries the drill and the dynamite while the Beep Antenna surveys.



11. Fresh sulfides are now examined. A 5 Lb. sample is taken for assays for gold and 34 elements



8. In the winter, the Beep Antenna can be pulled behind a snowmobile to cover large areas.



10. A worker sits on a float detected by the Beep Antenna and trenched. Four of the samples assayed averaged 2.97% Zn, 2.7% Cu, 30g/t Ag and 8g/t Au.

9. Dave prospector, looking at a conductor about to be blasted. All the equipment is moved fast and easily with the help of a sleigh.

Assay #	Oper.	Date	Position	Type	%	LFR	Mag	Azimuth	Depth	GPS co-ordinates		Comments	Assays				
										NAD	East		Au	Ag	Cu	Zn	S
		ALB		Outcrop				Dip	Size	UTM	North		ppb	ppm	%	ppm	%
				Boulder				Degrees	(m)								
14938	EG+LG	99-11-12	Surf	Outcrop		0		20		27	535 060	3 % PO	13	1.0	0.02	0.01	2.35
			Dyn					70 W		18 U	5 474 358	Mixture of basalt and tuff					
14940	EG+LG	99-11-12		Outcrop	37	450		15		27	535 134	30 % PY + 5 % QZ	18	1.2	4.04	0.14	13.6
								75 W		18 U	5 474 378	Tuff					
14941	EG+LG	99-11-12		Outcrop	60	700	-50	30	0	27	535 654	PO iron formation	251	0.0	0.02	0.00	18.4
						7,000		80 W	2.5 x 50	18 U	5 473 277	30 % PO					

Example of a typical table described the Beep Antenna sampling site.

BEEP ANTENNA, MODEL AL8 + GPS

The AL 8+ is a powerful miniaturized electromagnetic survey instrument that instantly detects conductive and magnetic outcrops or boulders hidden under up to 10 Feet of overburden. The usual geophysical targets tested may be IP, MaxMin, VLF or airborne EM conductors. The targets are quickly delineated and sampled for assay to determine if they are valuable showings or barren sulfide/graphitic conductors. The new Beep Antenna can be pulled by a man, a snowmobile or an ATV up to 18 MPH to detect conductors.

Stop Screening...



- A: Receiving unit
- B: Probe
- C: Charger
- D: Spare cable
- E: Carrying bag
- F: User's guide
- G: Calibration disk

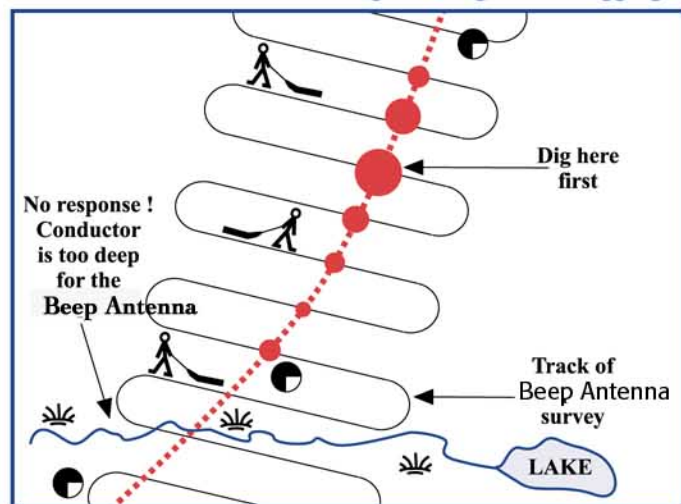
Components of the Beep Antenna



Start Finding !...



By using a Beep Antenna to sample conductors (sulfides, graphites, etc.) and choose among your assays the ones that warrant diamond drilling, blasting and or digging!!



- = Axis of EM conductor (from ground geophysics)
- = Airborne EM anomaly
- = Beep Antenna anomaly (values match diameter of circle)
- ☙ = Swamp



2. Organization of the day.



3. Initializing of the Beep Antenna



4. The Beep Antenna Beeps! A conductor has been localized.



5. A conductor detected at depth may be followed along strike until it comes close to the surface, as shown here, where it can easily be dug out.

Accurate Locators Inc.

1383 2nd Ave. Gold Hill, Oregon 97525

For Ordering (USA & Canada)

877-808-6200 or 541-855-1590 or 775-751-6931

International Sales: 01-541-855-1590 Fax: 775-537-6613

e-mail: accurate@accuratelocators.com

With show rooms in Gold Hill, OR
and Near Las Vegas, NV

Web site: www.accuratelocators.com